



# Autumn Word Wall

- **Tips for use**

- ✧ print and laminate
- ✧ run on yellow or pumpkin orange paper to add a seasonal look to your classroom
- ✧ place the word cards in an area convenient for student use
- ✧ select a few familiar cards to use when teaching phonemic awareness



monster



cornucopia



fall



football



gourd



family



harvest



hay



hayride



haystack



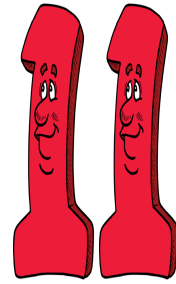
leaf



leaves



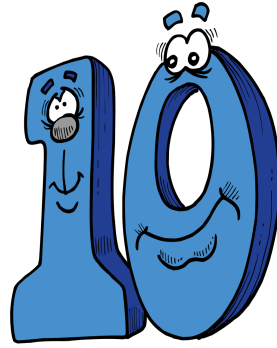
maize



November



nuts



October



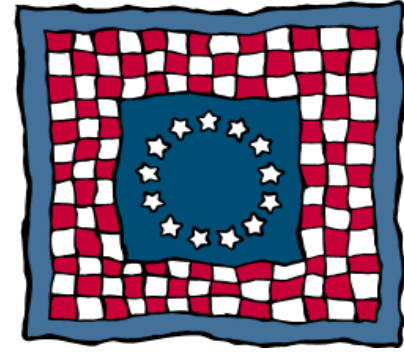
pine cone



pumpkin



pumpkin  
pie



quilt



rake



fruit



vegetables



feast



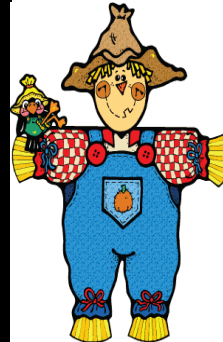
wreath



bread



pumpkin  
patch



scarecrow



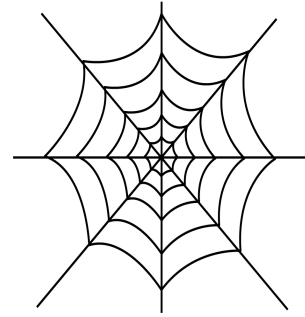
squirrel



September



spider



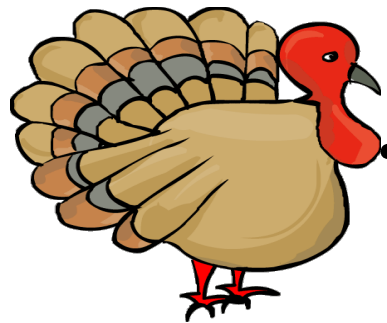
spider's  
web



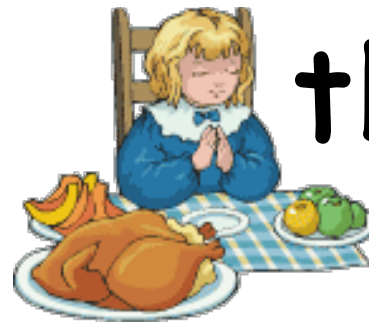
squash



Thanksgiving



turkey



thankful



Native  
American boy



Pilgrim  
boy



Native  
American girl



Pilgrim  
girl



Native  
American man

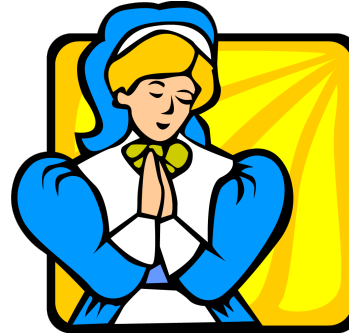


Pilgrim  
man





Native  
American  
woman



Pilgrim  
woman

